

FLL MD State Tournament Coaches Meeting

What to do before Saturday

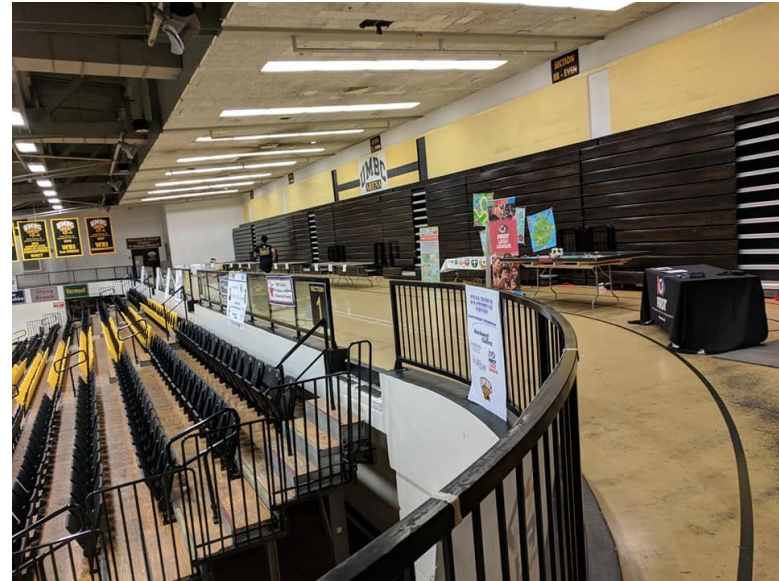
[State Championship @ UMBC](#) - Go here for all your needs

- Get roster uploaded to speed up check-in
- Check out the schedule for the day and plan lunch/snacks/how to manage the time
- Let parents know they **Can't** be in the pits
 - 2 Coach badges are provided
 - A 3rd may be requested at the registration desk if appropriate (NOT A Family member)
 - DO NOT PASS YOUR BADGE- your team will be penalized and awards will be removed should you violate the rules.
- Event will be livestreamed, link will be posted on the website
- Mentor award nominations due by 10am Saturday, must submit online

Lego kit/part sales

- Selling the following on Saturday
- Unopened kits from this year (about a dozen available)
- The kits from the competition (complete Superpowered kits)
- Opened boxes of kits from last year
- Bags of misc lego parts from various kits
- Venmo and cash, Venmo preferred

Walkthrough of Saturday



Check In

- Must be checked in by 8:00am (Coaches meeting is on main floor at 8:15am)
- You will receive
 - Wristbands
 - Badges/Lanyards
 - Individual team schedule with everything on one page.
 - Overall team schedule and judging schedule that shows everything
 - Pit Map to find your table and color group
 - Map of judging rooms with color groups listed
- Teams are organized by color groups so you know what robot tables to go to
- 2x6 pit table per team w/power and six chairs (no we can not provide more chairs and do not bring yours. Fire codes)

Pit Arena rules

You are allowed:

1. Bring signs, banners, and other paraphernalia to represent your team.
2. Computers, LEGO pieces etc.
3. Please eat all food in the PIT area or stands.
4. BRING FUN!

EMT/Nurse Available

There will be a nurse available all day if anything should occur. Their station will be located at the pit administration table.

Parents and Spectators

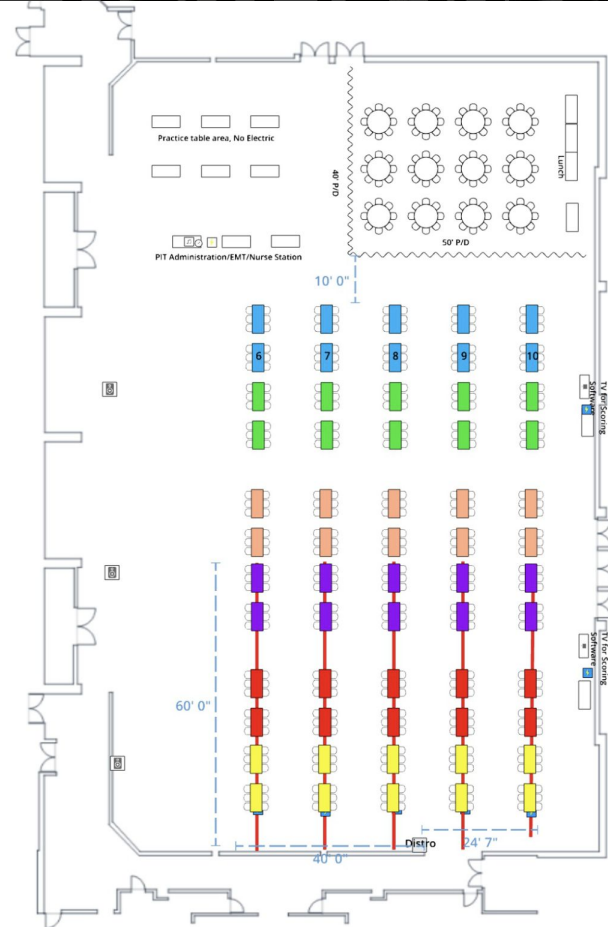
No parents or Spectators are allowed in the Pit- PLEASE HELP US!!!

No parents or Spectators allowed on the Main arena or judging rooms.

They are welcome to be in the Bleachers and walk the track, and university, visit the booths etc..

Practice Tables in the Pit area

- Each team gets 2 tickets to put in a particular 10 minute time slot
- Open slots later in the day can be claimed as available
- Exercise gracious professionalism on tables at all times



Practice Rounds on Competition Tables

- Meant to replicate afternoon competition, not just more team practice
- Teams should queue up 10 minutes before time, queuers will guide you
- Come up to table, prep, run a simulated round and go through scoring

Judging

- Teams must get themselves to judging
- There will be guides directing you, and everyone has a map
- Be considerate when in hallways since other teams might be in judging (watch your noise level- Remember gracious professionalism)
- Recording is allowed, and mentors can be in the room

Opening Ceremonies

- Will begin with all teams marching into arena (think Olympic parade)
- Short presentations and welcome
- Will conclude by 12:30
- First teams will be called to the tables at 12:45 for 1:00pm matches. Please be prompt, we cannot wait for teams.

Afternoon Competition

- Robot matches are on the tables for your color group
- Everyone will have a match on both tables
- Scores will be available on FllTournament.com and QR codes will be posted around the arena, and in the program



Closing Ceremonies

After the competition is over top 4 teams will do a exhibition playoff

- During the Seeding Rounds:
- You can clean your pit area
- When seeded rounds are done and the main arena tables are clear, ALL teams will report to the center of the main arena.
- Parents will stay in the bleachers.
- Awards will then be given out.
- Medals will be given before the closing ceremony at each of your pit tables

Closing ceremonies with awards and advancement will start approximately 4:15-4:30 and finish around 5:00pm